

Child Care Factsheet for Sullivan County

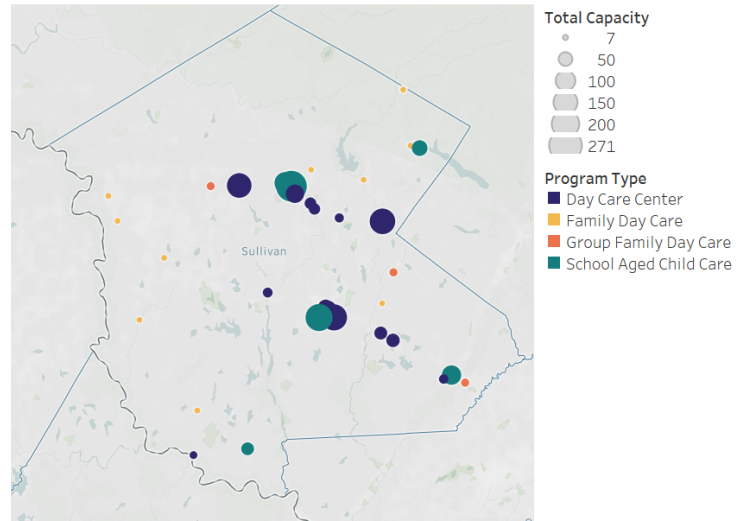
January 2024

Child care is a critical support for families with young children, employers, and New York state's economy. New York has made substantial investments in the child care system over the past few years, but more is needed to help the sector thrive. The supply of child care is not large enough to meet the needs of families, care is too expensive for many families to afford out-of-pocket, and the child care workforce is underpaid.

Sullivan County has 4,490 children under the age of 5 and 7,335 children between 5 and 12 years old out of a total population of 78,725. In the county, 71% of families with children under 18 have all adults in the workforce, and 78% of mothers with children under 18 are in the workforce across the county.

In Sullivan County, there were 47 child care programs in 2020 and 53 programs in 2024, a change of 13% over four years.

Sullivan County Child Care Programs by Modality and Capacity

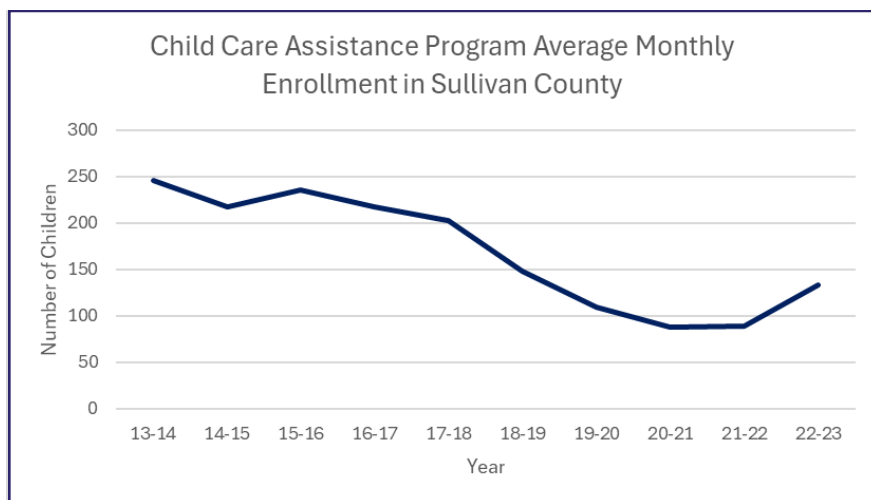


Capacity Change by Setting

Year	Day Care Center	Family Day Care	Group Family Day Care	School Aged Child Care
2020	907	168	176	421
2024	1 074	136	176	894
Change	+167	-32	0	+473

Capacity by Age

Age	# Children	Capacity	Ratio of Children-per-Slot
0-5	4,490	1,235	3.6 - 1
6-12	7,335	1,045	7.0 - 1



278
child care workers in Sullivan County
earn an average of
\$17.98/hour
or
\$36,684
annually
95.1%
of all jobs earn more than the average
child care provider

Child Care in Sullivan County



Child Care Assistance program reimbursements in Sullivan County have increased 3% from 2020-2024, from \$1,684,921 to \$1,730,504.



Over 71% of children living in Sullivan County qualify for some form of child care assistance. However, **only 1.7%** of eligible families were in enrolled in 2022-2023.



The annual copayment for a family of 4 making \$50,000 a year enrolled in the child care assistance program **decreased** from **\$2,000** a year to **\$200** a year **from 2020 to 2024**.

Annual Child Care Assistance Program Rates for Toddlers

Modality	2020	2024	% Change
Day Care Center	\$10,712	\$14,300	25%
Family Day Care	\$7,800	\$13,104	40%

Child Care Assistance Eligibility Level by Family Size

Family Size	Income Level (85% of State Median Income)
2	\$67,490.17
3	\$83,370.21
4	\$99,250.25
5	\$115,130.29

Average Cost of Infant Care

Day care center **\$18,574**
Family day care **\$15,776**



SUNY Tuition
\$7,070



In New York, it is cheaper to go to college than to pay for child care.

Notes and References

Data to inform this fact sheet was derived a number of different sources, including the US Census Bureau, the Office of Children and Family Services, the Office of Temporary and Disability Assistance, the Department of Labor, and from national child care researchers. All references and methodologies are available upon request.

To learn more about child care in your region and statewide, visit: <https://thechildrensagenda.org/reports/> or scan the QR code

